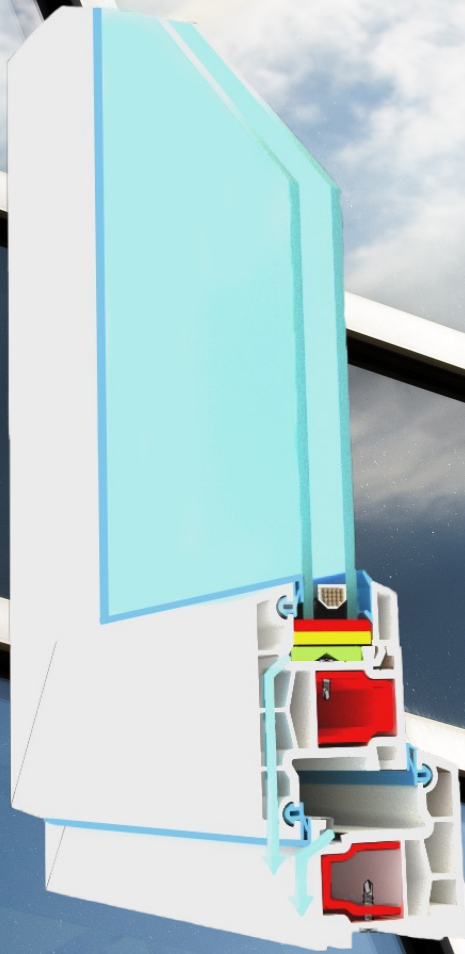


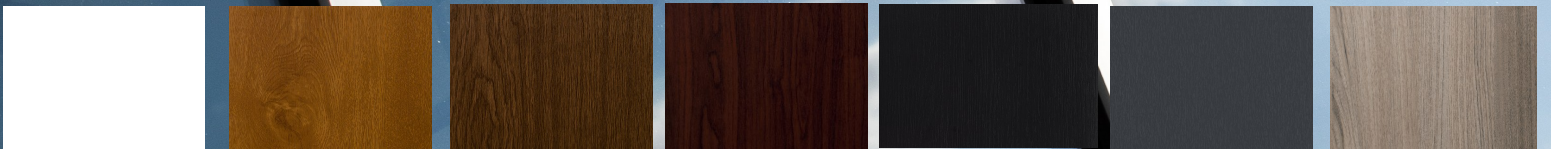
# **KOM PEN**

LINEA STAR LINE 500

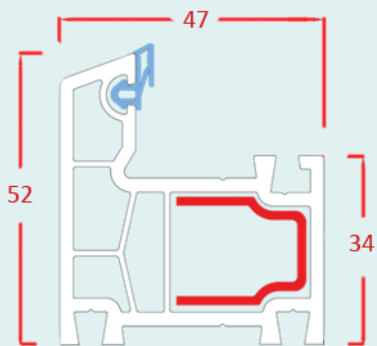
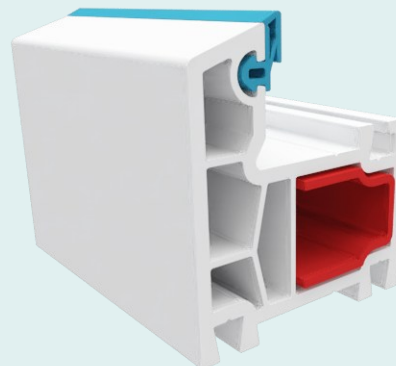
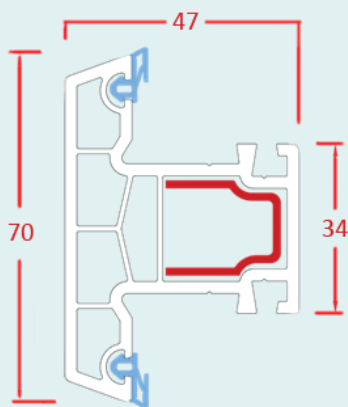
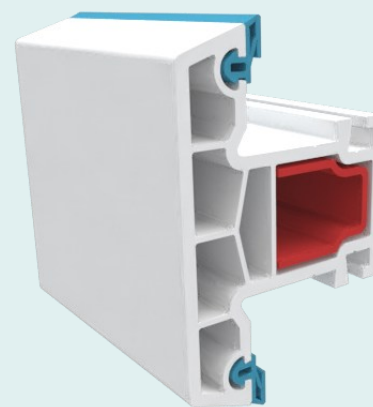
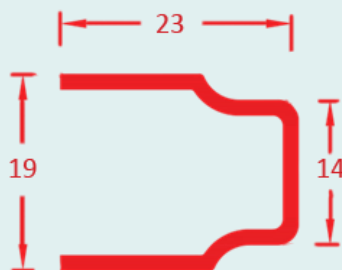
# KOM 500



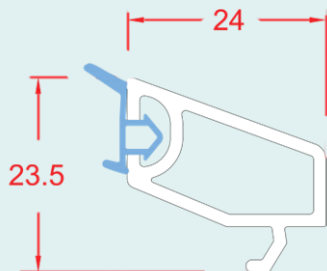
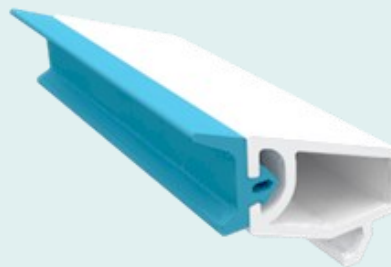
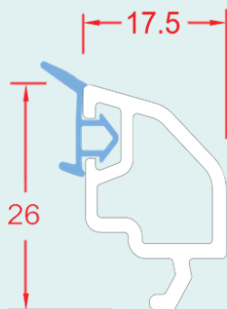
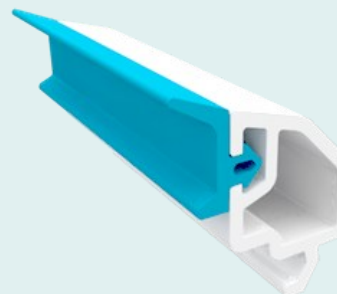
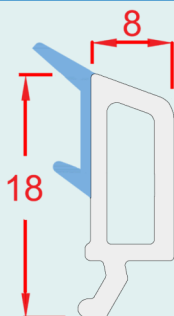
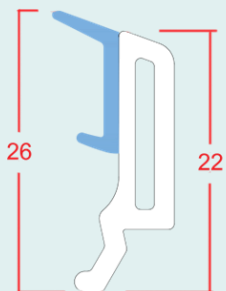
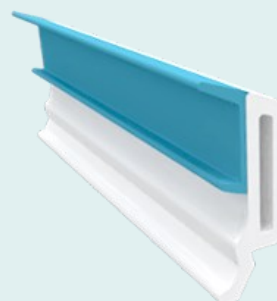
SISTEMA PARA VENTANAS FIJO - ABATIBLE



**TIHERMOWIN**

**MARCO FIJO 501****ILUSTRACION 3D****PILAR Y HOJA 503****ILUSTRACION 3D****REFUERZO 501 R501**

**S= 1.50 mm. 630 gr/mt  $I_x = 0.47\text{cm}^4$   $I_y = 0.45\text{cm}^4$**

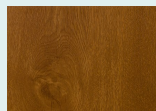
**JUNQUILLO SIMPLE 4-6 MM 505****ILUSTRACION 3D****JUNQUILLO SIMPLE 8-10 MM 608****ILUSTRACION 3D****JUNQUILLO T.P 18-20 MM 506****ILUSTRACION 3D****JUNQUILLO T.P 22-24 MM 512****ILUSTRACION 3D**



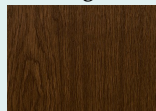
Blanco



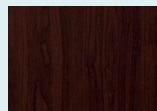
Kolonial



Nogal



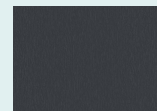
Caoba



Negro



Antracita



Anteak

**THERMOWIN KOMPEN**

\*Ruta S-91 km 4.5 Carretera Villarrica a Loncoche.

FONO :(45)2400330

EMAIL: [kompen@thermowin.cl](mailto:kompen@thermowin.cl)

**THERMOWIN KOMPEN**

\* Ruta 5 Sur km 1029 Alto Bonito - Puerto Montt.

FONO:(65)2276829

EMAIL: [kompen@thermowin.cl](mailto:kompen@thermowin.cl)

**THERMOWIN KOMPEN**

\*Panamericana Norte Sector Industrial Pid Pid

Parcela N° 4, Castro.

FONO:(65)2531050 / 2531070

EMAIL: [kompen@thermowin.cl](mailto:kompen@thermowin.cl)

[www.thermowin.cl](http://www.thermowin.cl)